



www.9ci.ca

RTK-RDM

Real-time kinematic (RTK) GPS for rolling density meters (RDM)

Features

- GPS specifications
 - RTK based system
 - 2.5cm accuracy
 - <1 minute to fix
 - Self-survey-in
 - NMEA messages
- System Power
 - Base Power - USB (battery)
 - Rover Power - USB (tablet)
- RTK Radio
 - 915 MHz radio
 - Range - 2km
- Mechanical
 - 6" dia, 4" ht
 - Ball mount
 - IP52 enclosure
 - Drop-safe
- Environmental
 - -10C to +60C
 - IP67 optional

System Description

RTK-RDM is a direct replacement for the consumer-grade Garmin Bluetooth GPS on the GSSI PaveScan RDM. It mounts directly to the PaveScan RDM cart, provides 2.5cm accuracy, and requires no configuration. RTK-RDM is available for \$1185.

To use RTK-RDM:

- 1) Mount RTK-RDM unit to rolling cart
- 2) Plug in via USB
- 3) Set the GPS COM port
- 4) Begin collecting data with RTK accuracy

RTK-RDM mounts via the existing ball mount on the rolling cart and is powered via USB from the tablet.

No configuration is required for the base station. Simply place on the roof of a vehicle or on a tripod above a pre-surveyed location. The base performs a self-survey-in when powered on.

RTK-RDM has a 2km typical range between base and rover, allowing large road sections to be measured without the need to move the base station.

RTK-RDM comes in a drop safe, rain-tolerant IP52 enclosure and can operate from -10C (+14F) to +60C (+140F). RTK-RDM units are designed, manufactured, and assembled by 9CI in North America. For more information, email David@9CI.ca.

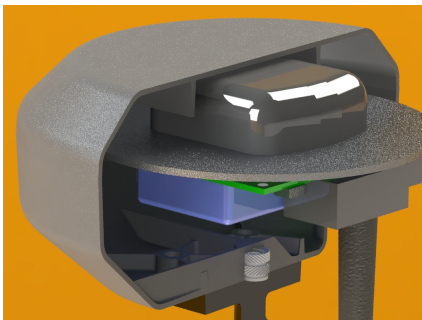


Figure 1: Rover Cutaway



Figure 2: Rover Ball Mount



Figure 3: Rover on Cart



www.9ci.ca